

Gibson Square Trail Realignment

Iowa City, Iowa



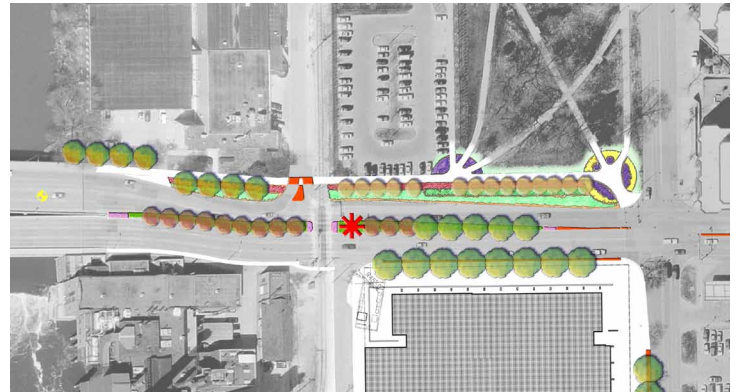
Project Description:

This heavily-traveled pedestrian corridor runs through Gibson Square, which is a coveted University of Iowa green space. The crumbling sidewalk required widening and relocation away from the heavy traffic of Burlington Street. The new Campus Recreation and Wellness Center on the south side of Burlington St. also necessitated the incorporation of landscape features to focus pedestrian traffic toward the Madison Street intersection to discourage mid-block crossings.

The design met and surpassed these needs through strategic placement of the Gibson Square fence and landscaping. The project also included the reconfiguration of a University of Iowa parking lot.

Status:

Completed in the Fall of 2007



Project Features:

- Coordination with multiple jurisdictions
- Landscaping and site design details that create a minor gateway into campus and the downtown
- Careful site grading to preserve existing street trees along Burlington.

Reference:

Scott Gritsch
Campus Landscape Architect, University of Iowa
T: 319.384.0748